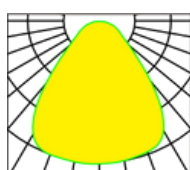


### HONOR SERIES - GD23L40E

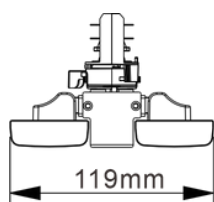
#### LED Track Panel Light



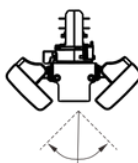
90°



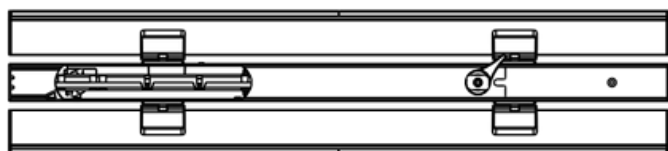
3CCT Selection



119mm



90° Rotatable for both sides



H78



L600

#### General Data

**Color:** matte black / matte white

**Installation method:** Track mounted

**Place of application:** Indoor

**Dimming option:** Non dim / TRIAC / 0-10V / DALI

**Track system:** 2 wires 1 phase / 3 wires 1 phase  
/ 4 wires 3 phases

**Size [mm]:** 600\*119\*78mm

#### Technical Data

**Rated voltage [V]:** 220-240 AC

**Rated frequency [Hz]:** 50-60

**Power [W]:** 40/ 55

**Class of protection against electric shock:** II

**Light source:** LED SMD

**Luminous flux [lm]:** 4800/ 6600lm

**Color temperature:** 3000K / 4000K / 5000K

**Colour consistency in McAdam ellipses:** ≤3

**Colour rendering index:** 80 / 90 / 97

**Service life [h]:** 50000

**Number of on/off cycles:** ≥30000

**Lighting angle [°]:** 90

**Luminous efficiency of the lamp [lm/W]:** 120

**Housing material:** aluminum alloy

**The fixture is movable horizontally [°]:** 355

**IP class:** 20

#### Additional Information

**Warranty:** 5 years

**Certification:** CE, RoHS