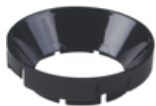


ECHO SERIES - GD18C10A

LED Track Light



Options:



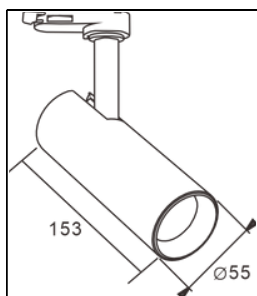
Black



White



Gold



General Data

Color: matte black / matte white

Installation method: Track mounted

Place of application: Indoor

Dimming option: Non dim / TRIAC / 0-10V / DALI

Track system: 2 wires 1 phase / 3 wires 1 phase
/ 4 wires 3 phases

Size [mm]: D55*153mm

Technical Data

Rated voltage [V]: 220-240 AC

Rated frequency [Hz]: 50-60

Power [W]: 10

Class of protection against electric shock: II

Light source: LED COB

Luminous flux [lm]: 820lm

Color temperature: 3000K / 4000K / 5000K

Colour consistency in McAdam ellipses: ≤3

Colour rendering index: 90

Service life [h]: 50000

Number of on/off cycles: ≥30000

Lighting angle [°]: 15/ 23/ 36/ 45/ 60

Luminous efficiency of the lamp [lm/W]: 80

Housing material: aluminum die-cast

The fixture is movable horizontally [°]: 350

The fixture is movable vertically [°]: 90

IP class: 20

Additional Information

Warranty: 5 years

Certification: CE, RoHS