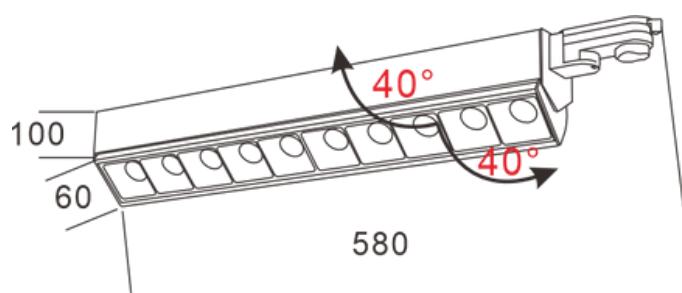
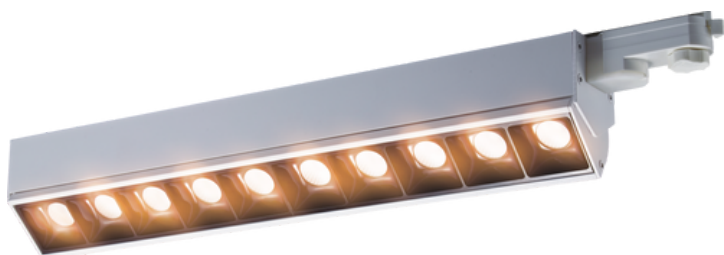


### GD18B SERIES - GD18B50C

#### LED Linear Track Light



#### Accessory & Adapter



White



Gold



3-phase (4 wires)

#### General Data

**Color:** matte black / matte white

**Installation Method:** track mounted

**Place of application:** indoor

#### Technical Data

**Rated voltage [V]:** 220-240 AC

**Rated frequency [Hz]:** 50-60

**Power [W]:** 40/ 50

**Class of protection against electric shock:** II

**Light source:** LED SMD

**Luminous flux [lm]:** 3000/ 4000lm

**Color temperature:** 3000K/4000K/5000K

**Colour consistency in McAdam ellipses:**  $\leq 3$

**Colour rendering index:** 90

**Service life [h]:** 50000

**Number of on/off cycles:**  $\geq 30000$

**Lighting angle [°]:** 15/30/45

**Reflector:** PC

**Light Shape:** round

**LED Inside Dimension:** 5050

**Luminous efficiency of the lamp [lm/W]:** 75

**Housing material:** aluminum alloy

**The fixture is movable vertically [°]:** 40

**IP class:** 20

**Size [mm]:** 580\*60\*100

**Operating temp. [°C]:** -25~50

**Storage temp. [°C]:** -25~45

#### Additional Information

**Warranty:** 5 years

**Certification:** CE, RoHS