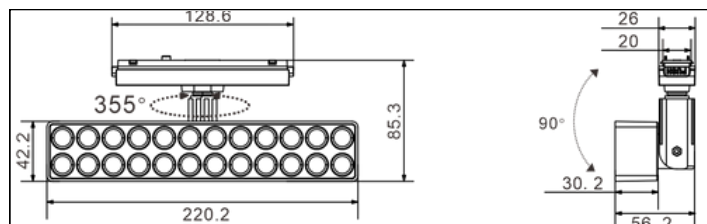
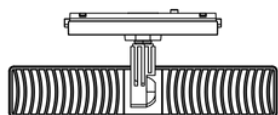
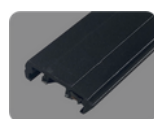


G1 SERIES - CX23E24B

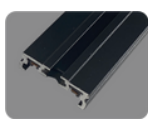
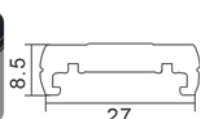
LED Magnetic Track Light



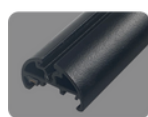
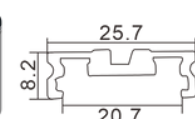
Magnetic Track Display



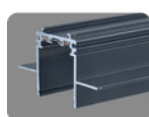
Surface mounted track 1



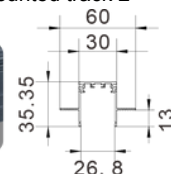
Surface mounted track 2



Hanging track



Recessed track



General Data

Color: matte black / matte white

Installation method: track mounted

Place of application: Indoor

Driver: No Dim/ Bluetooth/ Zigbee/ Tuya Dim

Track installation: surface mounted/ hanging/ recessed

Size [mm]: D220.2*42.2mm

Technical Data

Rated voltage [V]: 48 DC

Power [W]: 24

Light source: LED SMD

Luminous flux [lm]: 1680lm

Color temperature: 3000K-4000K-5000K

Colour consistency in McAdam ellipses: ≤3

Colour rendering index: 90

Service life [h]: 50000

Number of on/off cycles: ≥30000

Lighting angle [°]: 24/ 36

Luminous efficiency of the lamp [lm/W]: 70

Housing material: aluminum die-cast

IP class: 20

Additional Information

Warranty: 5 years

Certification: CE, RoHS