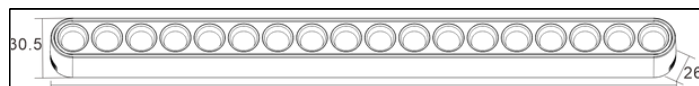
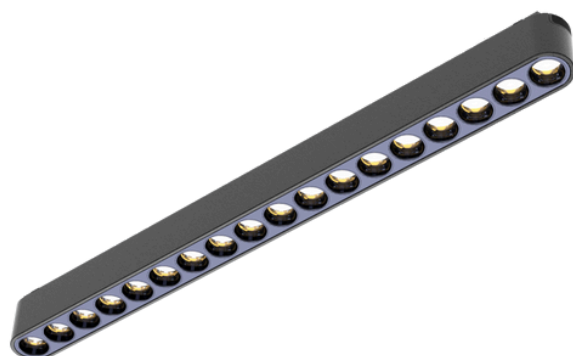
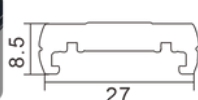
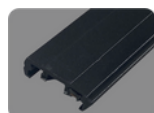


G1 SERIES - CX23B18B

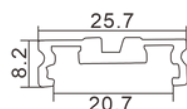
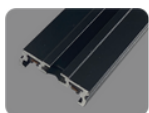
LED Magnetic Track Light



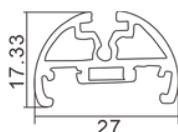
Magnetic Track Display



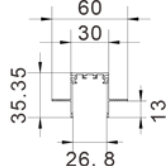
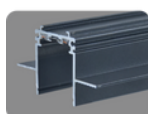
Surface mounted track 1



Surface mounted track 2



Hanging track



Recessed track

General Data

Color: matte black / matte white

Installation method: track mounted

Place of application: Indoor

Driver: No Dim/ Bluetooth/ Zigbee/ Tuya Dim

Track installation: surface mounted/ hanging/ recessed

Size [mm]: 353*26*30.5mm

Technical Data

Rated voltage [V]: 48 DC

Power [W]: 18

Light source: LED SMD

Luminous flux [lm]: 1260lm

Color temperature: 3000K-4000K-5000K

Colour consistency in McAdam ellipses: ≤ 3

Colour rendering index: 90

Service life [h]: 50000

Number of on/off cycles: ≥ 30000

Lighting angle [°]: 24/ 36

Luminous efficiency of the lamp [lm/W]: 70

Housing material: aluminum die-cast

IP class: 20

Additional Information

Warranty: 5 years

Certification: CE, RoHS